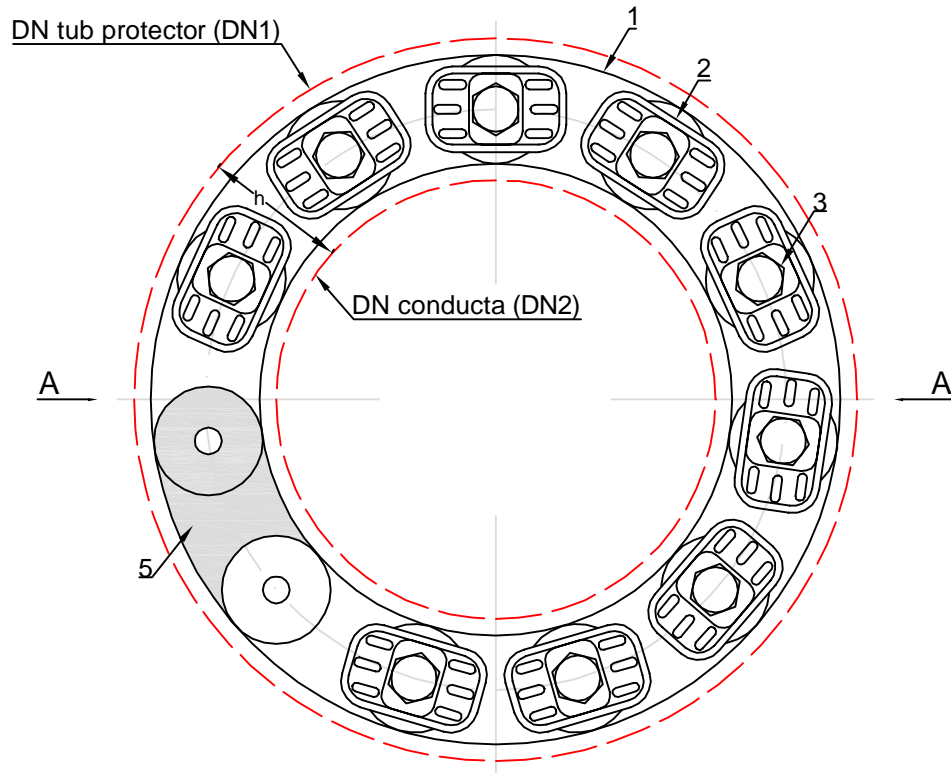
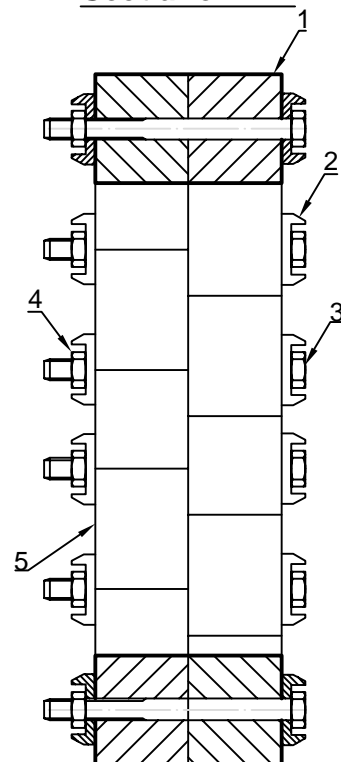


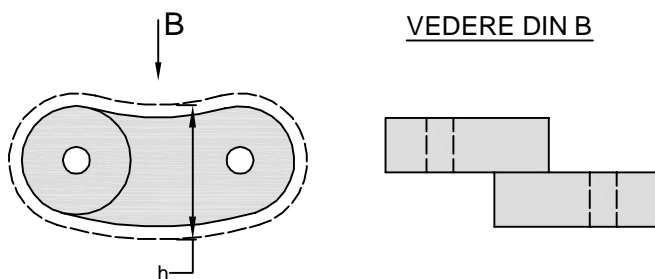
Detaliu presetupa



Section A - A



Detaliu segment de etansare



Date tehnice:

Tip: C

Versiune: Standard

Element de etansare: PEMD / cauciuc negru

Temperatura lucru: -40°C pana la +80°C

5	Inel de etansare			cauciuc
4	Piulita galvanizata			316
3	Surub galvanizat			316
2	Presgarnitura			PEMD
1	Garnitura			cauciuc
Poz.	Denumire			Material
300	150	69.80	500	7
DN1	DN2	h	Tip LS	Nr. segmente

Verificator/ Expert	Nume	Semnatura	Cerinta	Referat / Expertiza Nr. / Data

S.C. SNIF PROIECT S.A. Targoviste Numar de inmatriculare J15/925/2005				Beneficiar: CONPET S.A. PLOIESTI		Pr. nr. 310
Specificatie	Nume	Semnatura	Scara:	"Inlocuire conducta de transport titei 6 5/8" Ochiuri-Moreni, in zona statie Ochiuri - traversare parau Slanic, in lungime de cca. 600m si in zona islaz Ocnita in lungime de cca. 3000m (total cca. 3600m) si refacere instalatie de lansare curatitoare din incinta Statiei Ochiuri"		Faza PT+CS+DE
Sef proiect	Ing. Costea Paul					
Desenat	Ing. Radu Florin		Data: 2015	Detaliu presetupa Ø12 3/4" - Ø6 5/8"		Pl. nr. 13
Proiectat	Ing. Costea Paul					